

DIMENSIONS

REV.	ECN.	NO.	APPD.

MODEL CODE:

DCB0-00470- B □ 9T BK S 0 1

(1) (2) (3) (4) (5) (6) (7) (8) (9)

(1):Series type:SMD DC POWER JACK.

(2) Series No.

(3): Schematic option: B

(4):Center pin diameter:

C=Ø1.0, E=Ø1.3

(5):Material of housing:

91=PA91(Standard), 46=PA46

(6):Housing color:

BK=Black

terminal plating:

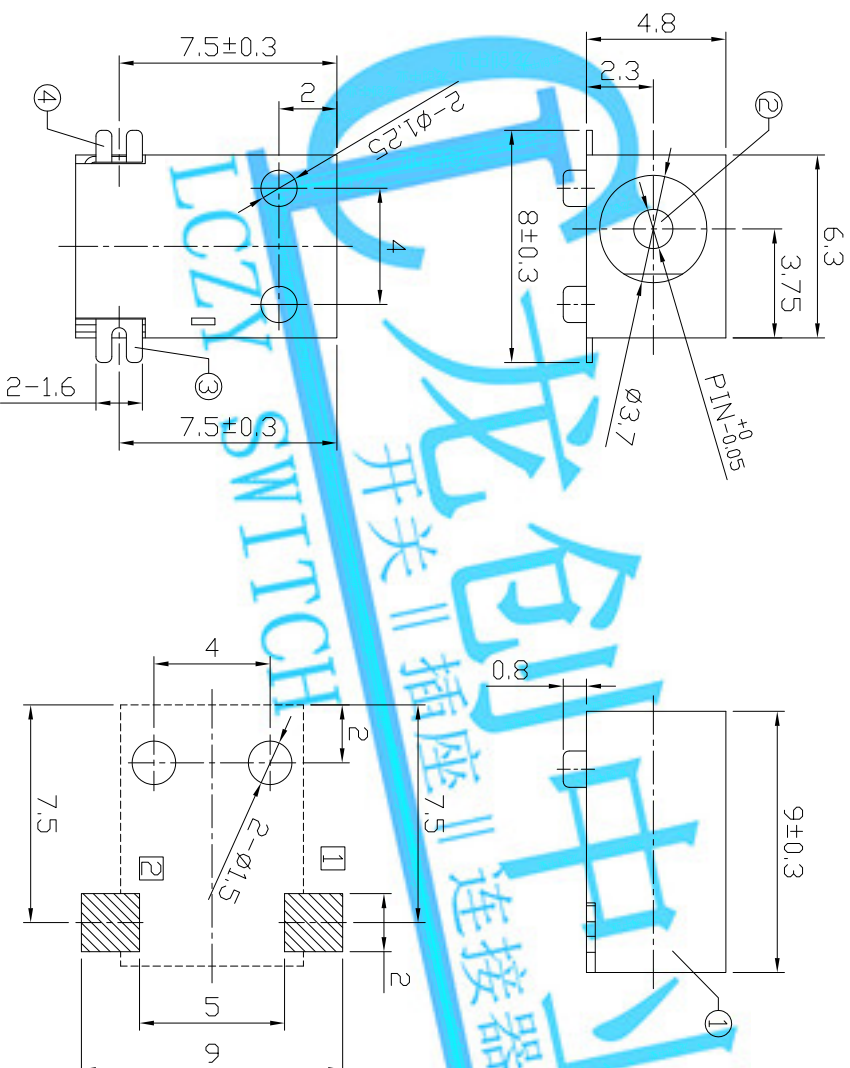
$$\gamma = \text{silver}(\text{Ag})$$

18) special option:

0=NO special options

[illegible]

1-keel pucking



SPECIFICATION

1. Rating : DC 30V 1A;

2. Contact resistance: $\leq 50\text{m}\Omega$;

3. Insulation resistance: $\geq 100M\Omega$ (DC500V);

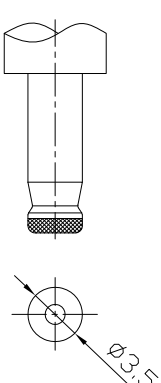
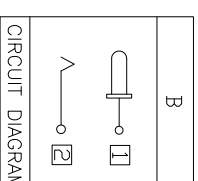
4. Withstand voltage: 500VAC ;

5. Insertion and extraction force: 3–30 N;

b. lite test: 2,000 cycles)


7. Operation temperature range: $-20^{\circ}\text{C} \sim 80^{\circ}\text{C}$

011 1 832 64 00 00



Model No.	C	E
CENTER PIN	ø1.0	ø1.3

DC MATE PLUG

						LONGCHUANG ZHONGYE (HK)CO.,LIMITED					
					TOLERANCE	ANGLES	UNITS mm	TITLE: SMD DC POWER JACK			PART NO.: DCB0-00470
④	Tip spring	<input checked="" type="checkbox"/>	Brass t=0.2	1	Silver plating		MAT'L				DWG NO.: ABO-00470
③	Center pin terminal	<input type="checkbox"/>	Stainless steel t=0.2	1	Silver plating		SEE NOTE				CUSTOMER DRAWING
②	Center pin	<input type="checkbox"/>	Brass	1	CuSn/Nickel plating		FINISH				
①	Housing		PA9T/PA46	1			SEE NOTE				
ND.	PARTS		MATERIAL	Q'TY	FINISHING		Q'TY				
											
THESE DRAWINGS AND SPECIFICATIONS ARE THE PROPERTY OF ACCURATE INNOTECH INC. AND SHALL NOT BE REPRODUCED COPIED OR USED IN ANY MANNER WITHOUT THE PRIOR WRITTEN CONSENT OF ACCURATE INNOTECH INC.											