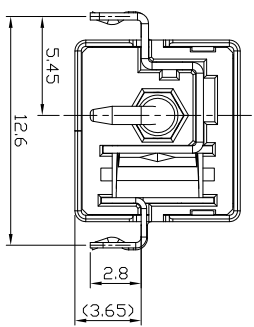
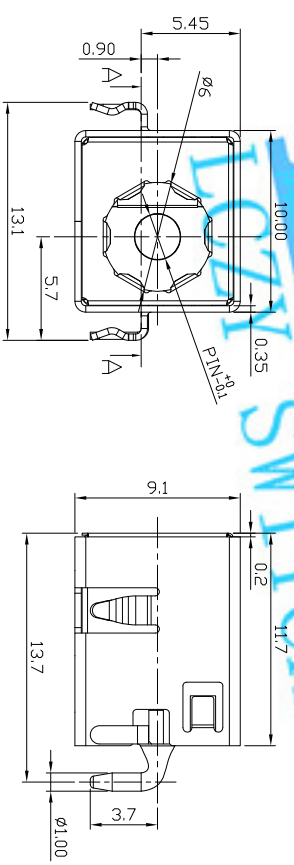
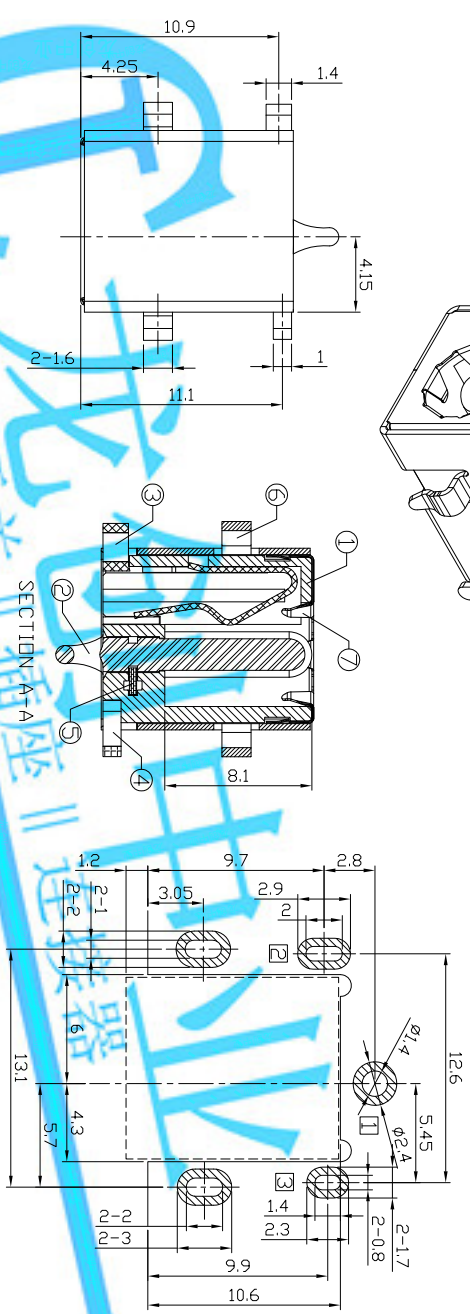
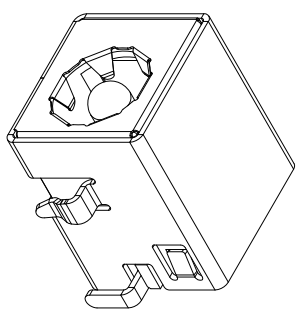


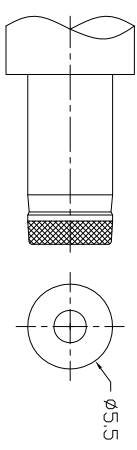
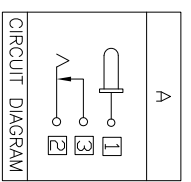
DIMENSIONS



RECOMMENDED P.C.B LAYOUT
UNSPECIFIED TOLERANCE:±0.05
(COPPER-SIDED VIEW)

- MODEL CODE:
DCB0-0116A- A □ 9T BK S 0. 1
(1) (2) (3)(4) (5) (6)(7)(8) (9)
(1):Series type:SMD DC POWER JACK.
(2):Series No.
(3):Schematic option: A
(4):Center pin diameter:
G=Ø1.65, H=Ø2.0, J=Ø2.5
(5):Material of housing:
9T=PA9T(Standard),10=PA10T
(6):Housing color:
BK=Black
(7):Terminal plating:
S=Silver(Ag)
(8):Special option:
0=No special option
H=Housing is Halogen Free,
W=White Reel
L=Blue Reel
(9):Packing mode:
1=Reel packing

- SPECIFICATION
1.Rating : DC 20V 7A;
2.Contact resistance: ≤30mΩ,
After life test:≤50mΩ;
3.Insulation resistance: ≥100MΩ (DC500V),
After life test:≥50MΩ;
4.Withstand voltage: 500VAC :
5.Insertion and extraction force: 3-30N;
6.life test: 5,000 cycles;
7.Operation temperature range:-20℃~70℃;
8.Preservative temperature range:-40℃~85℃;



DC MATE PLUG

Model No.	G	H	J
CENTER PIN	Ø1.65	Ø2.0	Ø2.5

○:ITEM NO. □:TERMINAL NO.

ITEM NO.	TERMINAL NO.	STAINLESS STEEL, t0.1	1	NICKEL PLATING	TOLERANCE	ANGLES	UNITS	mm	LONGCHUANG ZHONGYE (HK)CO.,LIMITED
⑦	Ground terminal	Brass, t0.35	1	Nickel plating	±0.3	±2°	MAT'L	SEE NOTE	DR: 2018/06/27
⑥	Shield	Brass, t0.4	1	Silver plating			FINISH	SEE NOTE	CHKD: 2018/06/27
⑤	Terminal	Brass, t0.4	1	Nickel plating			Q'TY	APPD:	SCALE 1/1
④	Shunt terminal	Phosphor bronze, t0.3	1	Black					REV. A
③	Tip spring	Zinc alloy	1						CUSTOMER DRAWING
②	Center pin	PA9T,PA10T UL94V-0	1						
①	Housing	PA9T,PA10T UL94V-0	1						
ND.	PARTS								