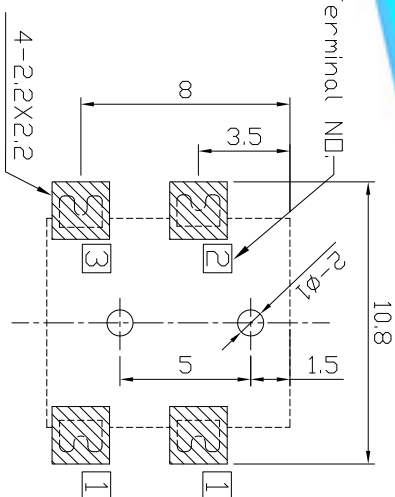
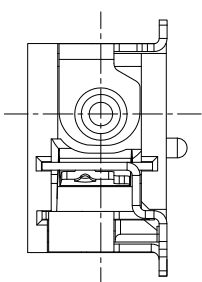
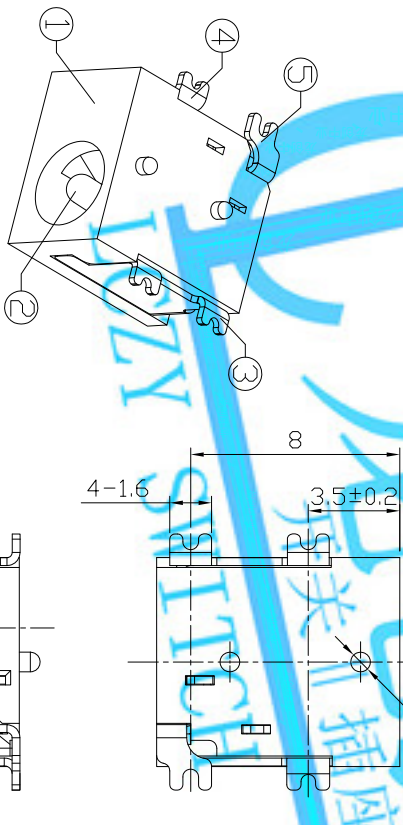
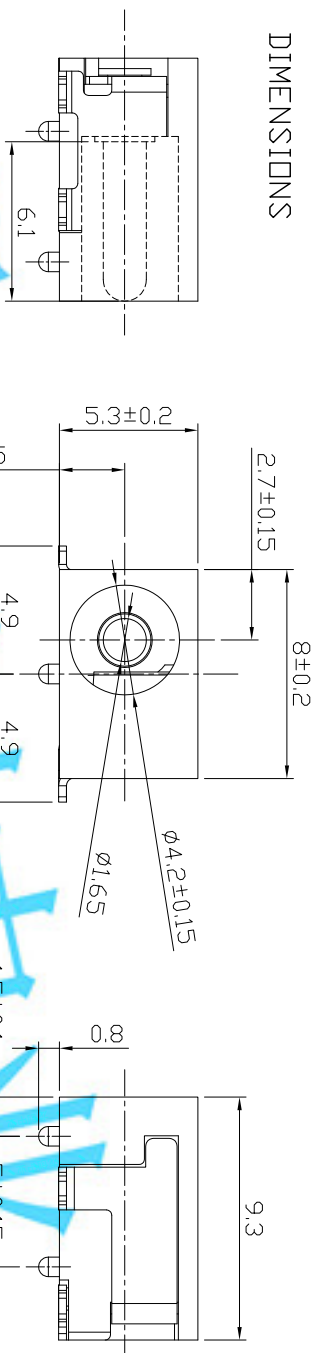
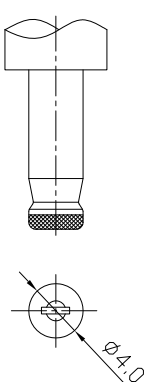
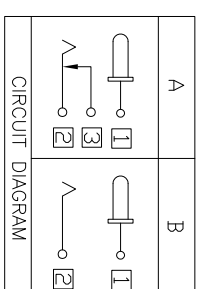


DIMENSIONS



RECOMMENDED P.C.B. LAYOUT
UNSPECIFIED TOLERANCE:±0.05



```


MODEL CODE:
DCB0-0033A- A G 9T BK S Q 1
(1) (2) (3)(4)(5) (6)(7)(8)(9)
(1):Series type:SMD DC POWER JACK
(2):Series No.
(3):Schematic option: A,B
(4):Center pin diameter:
    G=Ø1.65
(5):Material of housing:
    9T=PA9T(Standard)
(6):Housing color:
    BK=Black
(7):Terminal plating:
    S=Silver(Ag)
(8):Special option:
    0=No special option
(9):Packing mode:
    1=Reel packing

```

SPECIFICATION

- 1.Rating : DC 18V 5A;
- 2.Contact resistance : $\leq 30m\Omega$;
After test: $\leq 50m\Omega$;
- 3.Insulation resistance : $\geq 100M\Omega$ (DC500V);
After test: $\geq 50M\Omega$
- 4.Withstand voltage: 500VAC ;
- 5.Insertion and extraction force: 3-30N;
- 6.Iife test: 5,000 cycles;
- 7.Operation temperature range:-20°C~70°C;
- 8.Preservative temperature range:-40°C~85°C;

Model No.	G
CENTER PIN	Ø1.65

LONGCHUANG ZHONGYE (HK)CO.,LIMITED									
TITLE:				PART NO.:					
SMD DC POWER JACK				DCB0-0033A					
DR: Rocky 2018/06/15				DWG NO.: AB0-0033A					
CHKD: Rocky 2018/06/15				SCALE SHEET REV. CUSTOMER DRAWING					
APPD:				1:1 1/1 A					
									
UNITS mm									
MAT'L									
SEE NOTE									
FINISH									
SEE NOTE									
TOLERANCE									
ANGLES									
±0.3				±2°					
⑤ Shunt terminal ③		Brass,0.3t		1		Silver plating			
④ Tip spring ②		Phosphor bronze,0.3t		1		Silver plating			
③ Center pin terminal ①		Brass,0.3t		1		Silver plating			
② Center pin ①		Brass		1		CuSn/Ni plating			
① Housing		PA9T UL94V-0		1					
PARTS		MATERIAL		Q'TY		FINISHING			
ND.									