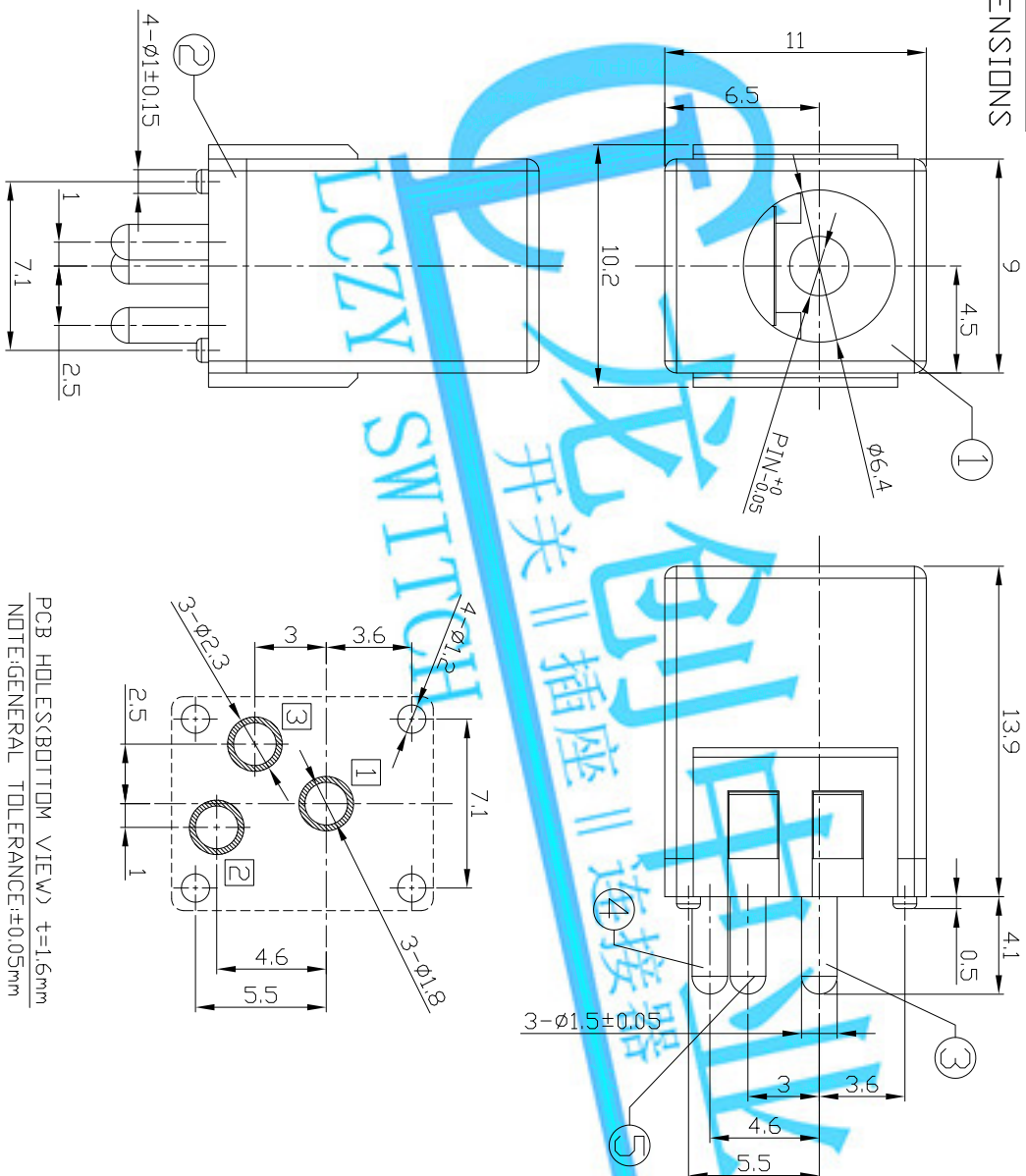


## DIMENSIONS



PCB HOLES(BOTTOM VIEW) t=1.6mm  
NOTE:GENERAL TOLERANCE:±0.05mm

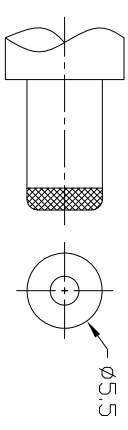
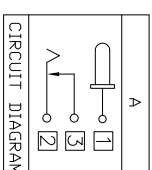
MODEL CODE:

DCB0-00510-A □ PB BK S 0 4

- ```
(1) (2) (3)(4) (5) (6) (7)(8) (9)
(1):Series type:DIP DC POWER JACK.
(2):Series No.
(3):Schematic option: A
(4):Center pin diameter:
    H=Ø2.0 , J=Ø2.5
(5):Material of housing:
    PB=PB(Default)
(6):Housing color:
    BK=Black
(7):Terminal plating
    S=Silver(Ag)
(8):Special option:
    0=No special option
(9):Packing mode:
    4=Bag packing
```

SPECIFICATION:



- 1.Rating : DC 24V 3.5A;
- 2.Contact resistance:  $\leq 30\text{m}\Omega$ ;  
After test: $\leq 50\text{m}\Omega$
3. Insulation resistance:  $\geq 100\text{M}\Omega$  (DC500V);  
After test: $\geq 50\text{M}\Omega$
- 4.Withstand voltage: 500VAC ;
- 5.Insertion and extraction force: 3-30N;
- 6.life test: 5,000 cycles;
- 7.Operation temperature range:-20°C~70°C;
- 8.Preservative temperature range:-40°C~85°C;



DC MATE PLUG

|            |      |      |
|------------|------|------|
| Model No.  | H    | J    |
| CENTER PIN | Ø2.0 | Ø2.5 |

O: ITEM NO.      D: TERMINAL NO.

|                                    |  |                                                                                   |  |                                                                                   |  |                |  |                  |  |
|------------------------------------|--|-----------------------------------------------------------------------------------|--|-----------------------------------------------------------------------------------|--|----------------|--|------------------|--|
| LONGCHUANG ZHONGYE (HK)CO.,LIMITED |  |                                                                                   |  |                                                                                   |  |                |  |                  |  |
| TITLE:                             |  | PART NO.:                                                                         |  | DCB0-00510                                                                        |  |                |  |                  |  |
| DIP DC POWER JACK                  |  |                                                                                   |  |                                                                                   |  |                |  |                  |  |
| DR: Rocky 2019/04/30               |  | DWG NO.: AB0-00510                                                                |  |                                                                                   |  |                |  |                  |  |
| CHKD: Rocky 2019/04/30             |  | SCALE                                                                             |  | SHEET                                                                             |  | REV.           |  | CUSTOMER DRAWING |  |
| APPD:                              |  | 1:1                                                                               |  | 1/1                                                                               |  | A              |  |                  |  |
|                                    |  |  |  |  |  |                |  |                  |  |
| UNITS                              |  | mm                                                                                |  |                                                                                   |  |                |  |                  |  |
| MATERIAL                           |  | SEE NOTE                                                                          |  |                                                                                   |  |                |  |                  |  |
| FINISH                             |  | SEE NOTE                                                                          |  |                                                                                   |  |                |  |                  |  |
| SEE NOTE                           |  | SEE NOTE                                                                          |  |                                                                                   |  |                |  |                  |  |
| TOLERANCE                          |  | ±0.3                                                                              |  |                                                                                   |  |                |  |                  |  |
| ANGLES                             |  | ±2°                                                                               |  |                                                                                   |  |                |  |                  |  |
| SHUNT terminal ③                   |  | Brass t=0.3                                                                       |  | 1                                                                                 |  | Silver plating |  |                  |  |
| Tip spring ②                       |  | Phosphor bronze t=0.3                                                             |  | 1                                                                                 |  | Silver plating |  |                  |  |
| Center pin ①                       |  | Brass                                                                             |  | 1                                                                                 |  | Silver plating |  |                  |  |
| Cover ②                            |  | Thermoplastic UL94V-0                                                             |  | 1                                                                                 |  | Black          |  |                  |  |
| Housing ①                          |  | PBT UL94V-0                                                                       |  | 1                                                                                 |  | Black          |  |                  |  |
| PARTS                              |  | MATERIAL                                                                          |  | Q'TY                                                                              |  | FINISHING      |  |                  |  |
| ND.                                |  |                                                                                   |  |                                                                                   |  |                |  |                  |  |