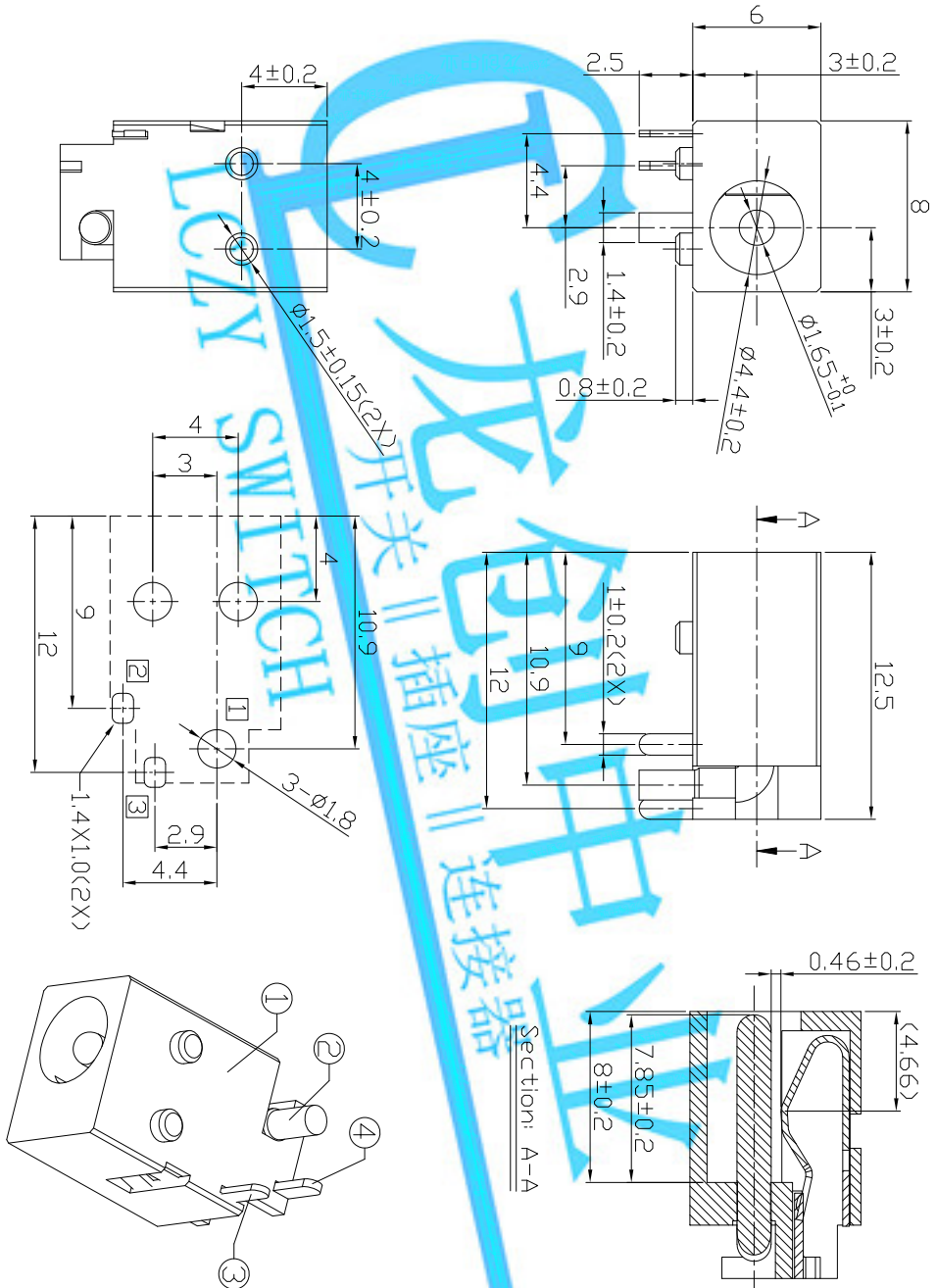
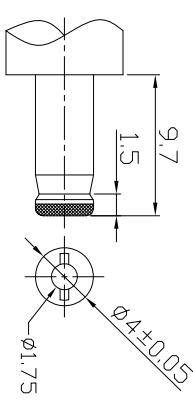
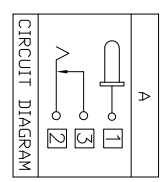
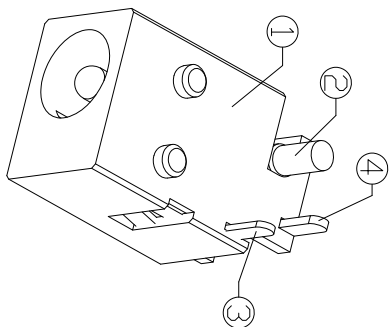


DIMENSIONS



RECOMMENDED P.C.B. LAYOUT
UNSPECIFIED TOLERANCE: ± 0.05
(BOTTOM VIEW)



- MODEL CODE:
DCB0-0023A- A G PB BK S Q 4
- (1) Series type: DIP DC POWER JACK.
(2) Series No.
(3) Schematic option: A
(4) Center pin diameter: G=1.65
(5) Material of housing: PB=PBT
(6) Housing color: BK=Black, 4D=Yellow(0417)
(7) Terminal plating S=Silver(Ag)
(8) Special option: 0=No special option
(9) Packing mode: 4=Bag packing

- SPECIFICATION:
- Rating : DC 20V 3A;
 - Contact resistance: $\leq 30m\Omega$;
After test: $\leq 50m\Omega$
 - Insulation resistance: $\geq 100M\Omega$ (DC500V);
After test: $\geq 50M\Omega$
 - Withstand voltage: 500VAC ;
 - Insertion and extraction force: 3-30N;
 - Life test: 5,000 cycles;
 - Operation temperature range: -20°C~70°C;
 - Preservative temperature range: -40°C~85°C;

○: ITEM NO. □: TERMINAL NO.

ITEM NO.		TERMINAL NO.		RECOMMENDED P.C.B. LAYOUT UNSPECIFIED TOLERANCE: ± 0.05 (BOTTOM VIEW)		TOLERANCE		ANGLES		UNITS		LONGCHUANG ZHONGYE (HK) CO., LIMITED	
ITEM NO.		TERMINAL NO.		RECOMMENDED P.C.B. LAYOUT UNSPECIFIED TOLERANCE: ± 0.05 (BOTTOM VIEW)		TOLERANCE		ANGLES		UNITS		LONGCHUANG ZHONGYE (HK) CO., LIMITED	
④		Shunt terminal ③		Brass t=0.4		1		Silver plating		SEE NOTE		TITLE: DIP DC POWER JACK	
③		Tip spring ②		Phosphor bronze t=0.3		1		Silver plating		SEE NOTE		PART NO.: DCB0-0023A	
②		Center pin ①		Brass		1		Silver plating		SEE NOTE		DR: Ricky 2019/04/10	
①		Housing		PBT		1				CHKD: Ricky 2019/04/10		DWG NO.: AB0-0023A	
ND.		PARTS		MATERIAL		Q'TY		FINISHING		APPD:		SCALE SHEET 1:1	
												REV. A	
												CUSTOMER DRAWING	