

DIMENSIONS

MODEL CODE:

DCBO-0006D- A □ 66 BK I 0 4

(1) (2) (3)(4) (5) (6) (7)(8) (9)

(1):Series type:DIP DC POWER JACK.

✓27:Series No.

(3):Schematic option: A , B

(4):Center pin diameter:

G=Ø1,65 ,H=Ø2,0

(5):Material of housing:

66=P466 (Standard)

(6):Housing C

BK=Black

(7):Terminal plating

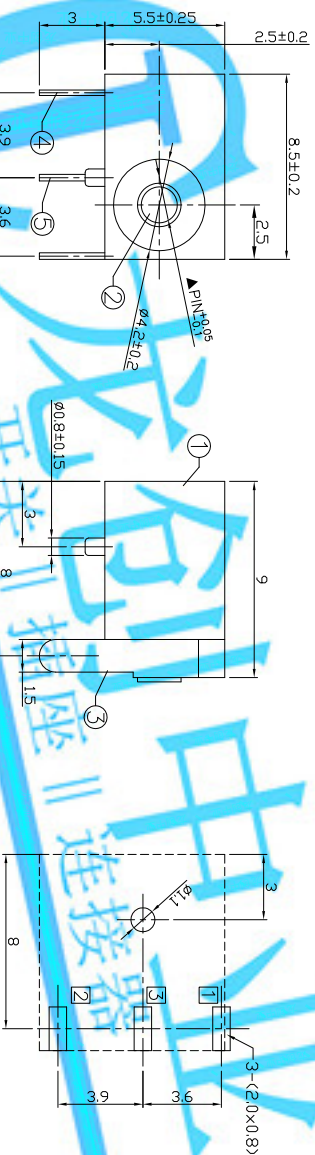
$$T = T_{in}(S_n)$$

(8):Special option:

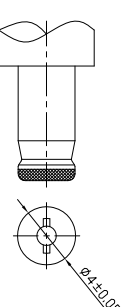
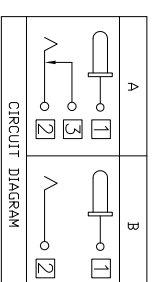
0=No special option

(9)Packing mode:

4=Bag packing




Recommended PCB Layout
(Tolerance ± 0.05)
(Copper-sided View)



DC MATE PLUG

Model No.	G	H
CENTER PIN	ø1.65	ø2.0

LONGCHUANG ZHONGYE (HK)CO.,LIMITED							
		TOLERANCE	ANGLES	UNITS mm			
⑤	Shunt terminal ③	Brass t=0.3mm	1	Tin plating	MAT'L	TITLE:	
④	Tip spring ②	Sainless steel t=0.25mm	1	Tin plating	SEE NOTE	PART NO.: DCB0-0006D	
③	Center pin terminal ①	Brass t=0.3mm	1	Tin plating	FINISH	DR: <i>Rocky</i> 2019/03/06	
②	Center pin ①	Brass	1	Nickel plating	SEE NOTE	DWG NO.: AB0-0006D	
①	Housing	PA66	1	Black	Q'TY	CHKD: <i>Rocky</i> 2019/03/06	SCALE SHEET REV. 1:1 1/1 A
ND.	PARTS	MATERIAL	Q'TY	FINISHING		APPD:	CUSTOMER DRAWING
<small>THESE FINISHES AND SPECIFICATIONS ARE THE PROPERTY OF LONGCHUANG ZHONGYE (HK) CO., LIMITED. THEY SHALL NOT BE REPRODUCED OR USED IN ANY MANNER WITHOUT THE WRITTEN CONSENT OF LONGCHUANG ZHONGYE (HK) CO., LIMITED.</small>							