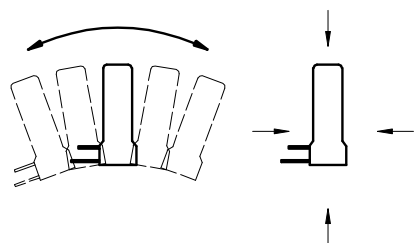
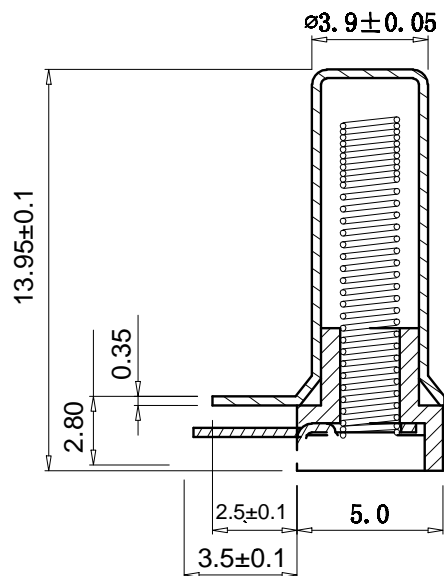
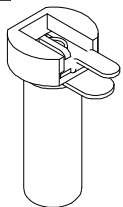
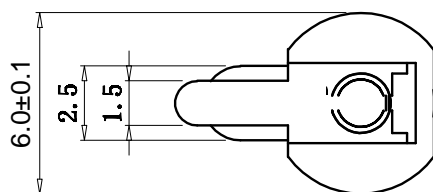




RoHS
Compliant
2002/95/EC



By external force touch or shaking
will be conduct instantaneously.



Feature:

- SW-630L is spring type, Non-direction vibration induced trigger switches, any angle can be trigger.
- The series of switches, at the rest is open circuit "OFF-state", When the external force to touch and reach the corresponding vibration, Or move in speed to reach the adequate centrifugal force. The conductive feet will be conduct instantaneously "ON-State". When the external force disappear, the switches will be revert the "OFF-State".
- The series of switches trigger sensitivity can be customize according to the customer requirement.
- In the normal, the switches lifespan can be reached 200,000 cycles.
- Suitable for the toys, anti-theft alarm system, electronics scales etc electronic product.

产品名称		SW-630L		9	操作寿命	200000
产品编号				8	湿 度	95RH 40度，96小时
图纸编号				7	端子拉力	500gf/分钟
单位	MM	版本	A	6	耐 温	-40度至80度
比例	4:1	画法		5	开路电阻	10Mohm
制图	Zhang Wenhao	日期	2015. 10. 15	4	闭路电阻	10ohm
审核		日期		3	导通时间	约2ms
核准		日期		2	电 流	小于20mA
				1	电 压	小于12V
				产品特性		

5	热收缩管	PE/PET热收缩管	1
4	封口胶粒	耐温PC	2
3	滚珠	不锈钢/铜, 镀银/金	2
2	导针	黄铜, 镀银/金	2
1	铜管	黄铜, 镀银/金	1
序号	零件名称	材质	数量

LONGCHUANG ZHONGYE (HK)CO.,LIMITED			
TITLE: Vibration Switch		PART NO.:	
DR: Ricky 2014/04/02		DWG NO.: SW-630L	
CHKD: Ricky 2014/04/02		SCALE	SHEET
APPD:		1:1	1/1
		REV.	CUSTOMER
		A	DRAWING