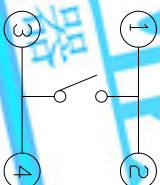
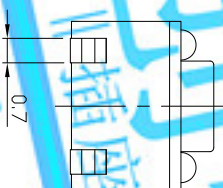
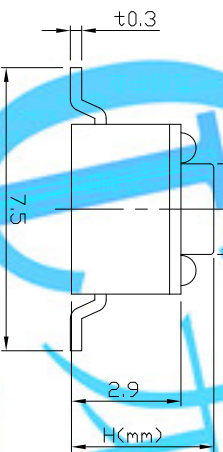


## DIMENSIONS



	H
-	3.8
A	7.0
B	4.8

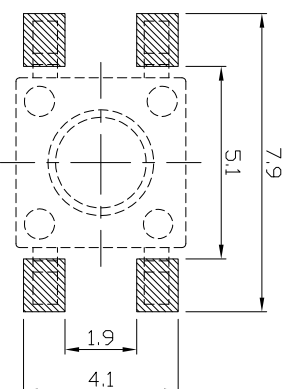
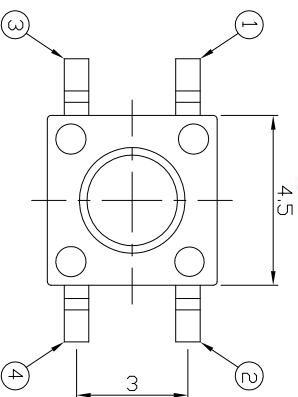
## CIRCUIT DIAGRAM

PRODUCT IMAGE

## MODEL CODE

## P.C.B MOUNTING PATTERN DIMENSION

The following soldering patterns are recommended for reflow soldering



## ELECTRO-MECHANICAL CHARACTERISTICS

Refer to additional specifications

Rating	DC 12V 50mA	
Contact Resistance	100mΩ Max.	
Travel	0.25 ± 0.1mm	
Operating Force	160±30gf	250±50gf
Operating Life(cycles)	100,000	

[illegible]